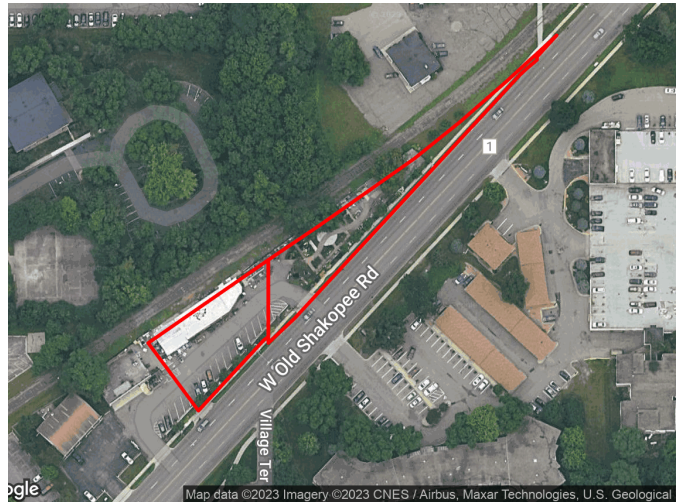


# Property Fact Sheet



Old Cal's Market site  
2100 West Old Shakopee Rd  
Bloomington, MN



*Stunning site with a pond, a waterfall, and blooming plants on boulevard; located on .89 acres spanning 500 feet of frontage on Old Shakopee Road in Bloomington, MN. Pylon sign and good sight lines from Old Shakopee.*

- *For Lease. \$3,000per month; plus utilities.*
- *2023 Real Estate Taxes \$18,550.44*
- *Located at 2100 West Old Shakopee Road, Bloomington, MN*
- *22'x29' Greenhouse attached to a 70' x 22' brick showroom with multiple overhead doors for open air display and sales.*
- *Secured site. Completely fenced with dual gate access.*
- *Zoned B-2*

***Call: Julie A. Bauch 612-860-2467***

